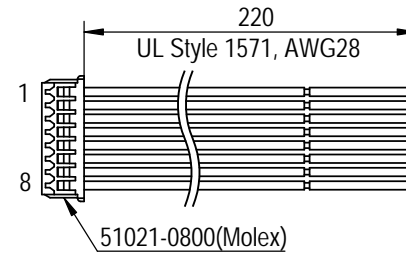
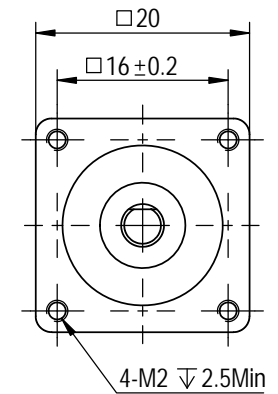
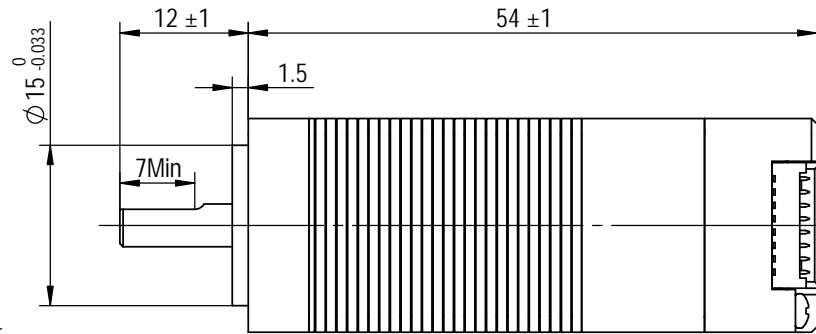
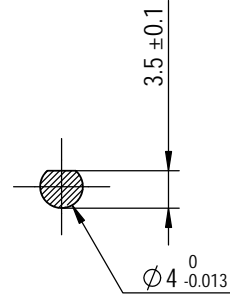
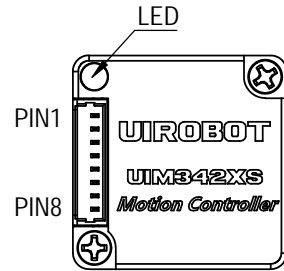


RoHS
COMPLIANT

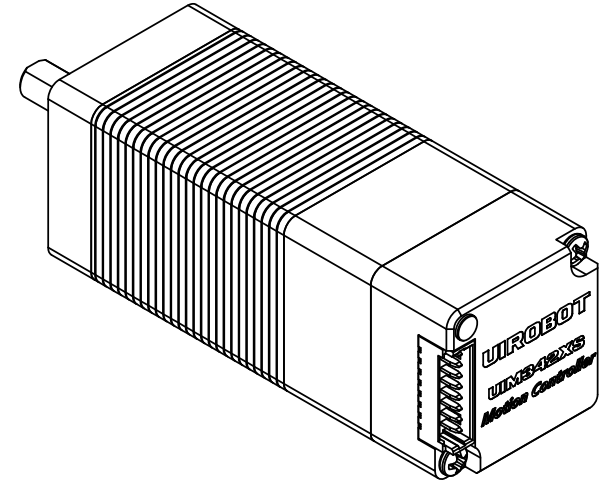
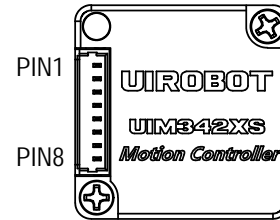
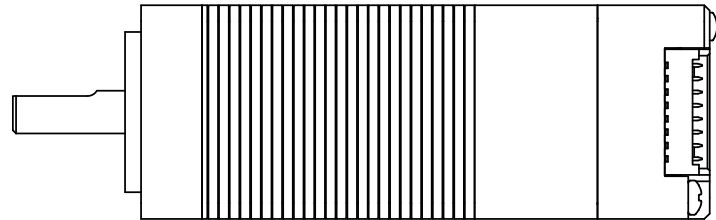
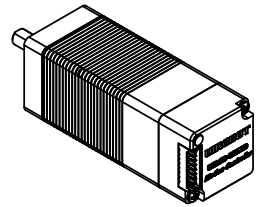


Weight: 83g

Dimensions Unit=mm

STEP ANGLE	1.8°±5%/full step	NUMBER OF PHASE	2	MATERIAL			
RATED CURRENT	0.6 A/Phase	WEIGHT	83g				
ROTOR INERTIA	2.9 g.cm ²	AXIAL-FORCE	Fa=4 N Max	STAGE MARK	WEIGHT	SCALE	MODEL NUMBER
SOURCE VOLTAGE	24 VDC	RADIAL-FORCE	Fr=10 N Max				83g
HOLDING TORQUE	0.038 N.m				FIRST ANGLE PROJECTION		DWG NO.
OPERATION AMBIENT	Ambient temperature: 0...+50°C , humidity Max.90% (No condensation)						
STORAGE AMBIENT	Ambient temperature: -20°C...+70°C , humidity Max.90% (No condensation)			SHEET 1 OF 2		EDITION	

RoHS
COMPLIANT



Weight: 83g

Dimensions Unit=mm

STEP ANGLE	1.8°±5%/full step	NUMBER OF PHASE	2	MATERIAL			UIROBOT
RATED CURRENT	0.6 A/Phase	WEIGHT	83g				
ROTOR INERTIA	2.9 g.cm ²	AXIAL-FORCE	Fa=4 N Max				
SOURCE VOLTAGE	24 VDC	RADIAL-FORCE	Fr=10 N Max	STAGE MARK	WEIGHT	SCALE	MODEL NUMBER
HOLDING TORQUE	0.038 N.m				83g	2:1	UIM2040CM
OPERATION AMBIENT	Ambient temperature: 0...+50°C , humidity Max.90% (No condensation)			FIRST ANGLE PROJECTION			DWG NO.
STORAGE AMBIENT	Ambient temperature: -20°C ...+70°C , humidity Max.90% (No condensation)			SHEET 2 OF 2			EDITION